

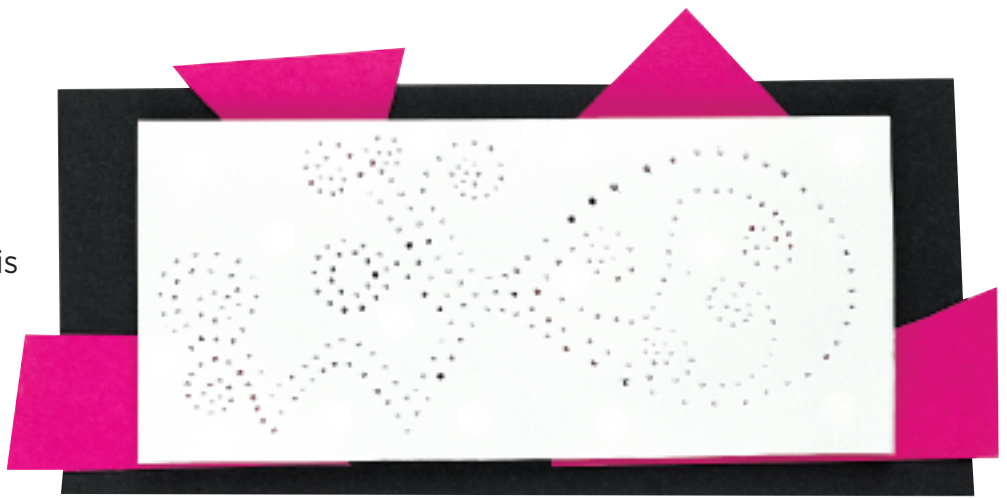
# Foam Punch

Punched tin and metal is an old, traditional craft that involves creating holes in metal with sharp tools to form a design. Original designs were abstract patterns. This safe and colorful version is also abstract.

**Grade Levels** K-6

## Process

1. Use the print foam sheet full size or trim. Keep the sheet big to allow space for the design. Lightly draw a pattern to punch. Abstract designs can include geometric shapes and curved lines. Leave some blank space between so they show up clearly.
2. Place the magazine under the foam sheet. Position the area you wish to punch slightly off the edge of the magazine. The magazine acts as a spacer, supporting the foam while allowing the wood stick room to create the punch. Using slight pressure, push the pointed tip of the wood stick through the foam. Repeat until design is complete.
3. Select a bright colored railroad board to place under the design. Place 3D-Os<sup>®</sup> between the two pieces. Add extra small shapes of railroad board to add color.



## Materials

[Inovart Print Foam Sheets, 9" x 12"](#) (40403-1023) package of 48 sheets, need one sheet per student

[Scratch-Art<sup>®</sup> Sticks](#) (14907-1045) package of 100, need one per student

[Scratch-Art<sup>®</sup> 3D-O's<sup>®</sup>](#) (14904-1003) package of 400, need one per class

[Peacock<sup>™</sup> Railroad Board 11" x 14"](#) (13105-0459) 4-ply, package of 50 sheets, assorted colors, need one per student

[One magazine per student](#)

Copyright © 2007 Dick Blick Art Materials. All rights reserved.

## National Standards

Content Standard #1 — Understanding and applying media, techniques and processes

**K-4** Students use art materials and tools in a safe and responsible manner

