

**THIS IS YOUR HANGING TEMPLATE  
PLEASE READ BEFORE BEGINNING.**

## Instructions & Helpful Hints

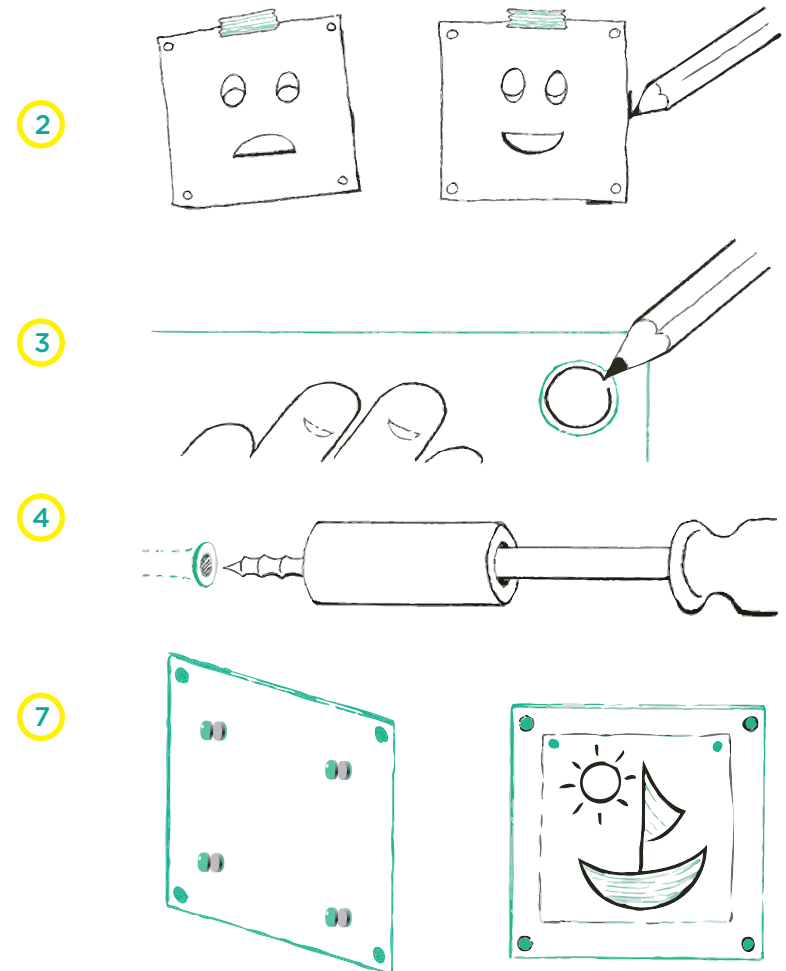
- 1** In addition to the hardware provided, you'll need a pencil, Phillips head screwdriver and a drill. A level or measuring tape is important to help you hang your frames straight.
- 2** Use this template to help decide placement first, by taping it to the wall where you want your frame to hang. Step back and look. Do you like the height? Is it straight?
- 3** When you are happy with the placement, trace the top two holes onto your wall with a pencil. The frame can hang from just two points, but install the bottom two hardware if the frames must be extra secure to wall. Lightly mark the wall along the top, bottom & side of template to measure between frames when hanging
- 4** Use the correct drill bit for drywall anchors (when needed) or screws. See hardware package for details. Drill holes on top two marks (or all 4). Drop screws into the hardware barrels. Screw into drywall anchors or pilot holes with a screwdriver.  
*Once the barrels are secured, loosen them by 1/4 turn. This little bit of "wobble room" will help you tweak the alignment of the acrylic to the barrels. Don't loosen them too much!*
- 5** Peel off protective paper from the frame.
- 6** Put cap-screws through top 2 holes in frame. Holding acrylic by the edges, position caps over the barrels, and screw in place. After you get them both in place, secure completely. Now attach the bottom two caps and barrels.  
*Finish by loosening each cap-screw by 1/4 turn to let the acrylic "breathe". Erase any visible pencil marks on the wall.*

### Take a moment to enjoy your handy-work.

**Hanging a group of frames?** Put up all the templates first, to help you decide on the right arrangement. We recommend at least 3" in space between frames.

**A level** is the fastest way to make sure your frame installs straight. Just balance it at the top of this template while marking your placement holes.

**No drill?** No problem! Use self-drilling drywall anchors, available at any hardware store.



- 7** Now it's time to show off your creativity! Position pairs of magnets on each side of the frame, flat sides touching frame so they are easy to slide around. Use these strong magnets to hold art, photos & more. Change your display often to keep the look impressively up-to-date.

#### Maintaining your Wexel frames:

Clean acrylic panels with a soft dry lint-free cloth, or dish soap & water when needed. Do not use glass cleaners or spirits. Acrylic polishers are available, and can fix small scratches. Be careful not to scratch the plastic with hard surfaces!

**Frame isn't straight?** If it's hung from the top 2 points, the bottom barrels give you a second chance to set things straight: Decide which of the top anchor points is wrong. Unscrew that barrel. Adjust the angle of the frame as needed. Trace the bottom hole, diagonally opposite the correct barrel, as the new anchor point.

**Safety:** Remember, small magnets pose a choking hazard & are unsuitable for children under 3. Try our larger Art Magnets as an alternative.